

Rekluse Motor Sports

The z-Start™ Clutch

TRX 450

Installation Guide

Copyright 2002 Rekluse Motor Sports
z-Start Revision 3.000
RMS115 – TRX 450

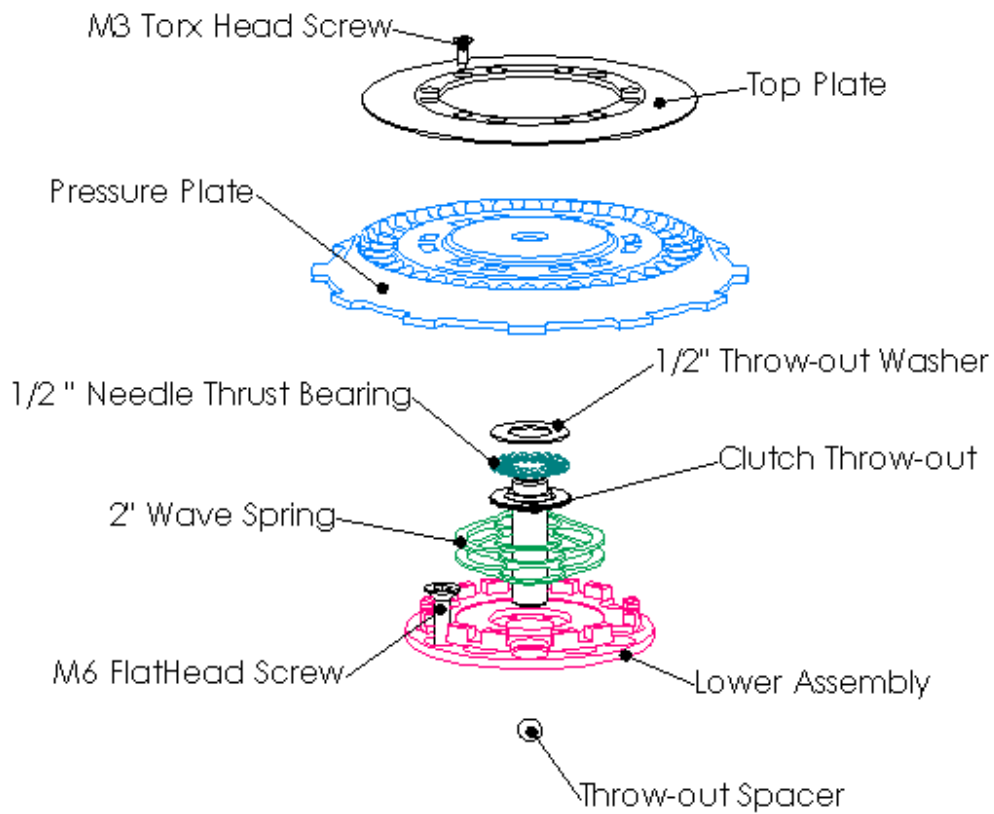
191-215
Manual Revision: 040505

Rekluse Motor Sports, inc.
110 E. 43rd Street
Boise, Idaho 83714
208-426-0659
support@rekluse.com

Required Tools

8mm socket	2 Sets of feeler gauges
10mm socket	Inch Pound Torque Wrench
4mm allen key socket	Torx T10 driver tip (included)
3mm allen	Blue Loctite 243 (oil resistant)
1/4 inch driver (for included Torx T10 driver tip)	

z-Start Overview



Note: The Lower Assembly is packaged underneath the Pressure Plate and held in place with two screws through the Top Plate.

Included Parts for the z-Start Clutch

Note: spare screws, balls and shims may be included with your clutch

Top Plate	2" (51mm) Wave Spring (CS200L1)
Pressure Plate	12 x M3 #10 torx screws
Lower Assembly	25 x 3/8" (9.53mm) balls
6 x .047 (1.2mm) Drive Plates	5 x 3/8" (9.53mm) Tungsten Carbide balls
290" x .130" Throw-Out Spacer	18 x .010" (0.25mm) Mounting Shims
6 x M6 Flat Head Screws	1 Clutch Cover Gasket
6 x M6 Threaded Studs (to assist mounting)	1 x .055 (1.4mm) Drive Plate – for wear adjustment

Basic z-Start Clutch Operation

The z-Start Auto Clutch functions through centrifugal force. As engine RPM increases, the balls contained in the z-Start Pressure Plate travel up the ball ramps and push against the Top Plate. This action forces the Pressure Plate to engage the clutch pack.

Installation Tips

In order for the z-Start Clutch to perform properly, it must be mounted properly.

- Measuring and maintaining the Installed Gap is **critical**. If the Installed Gap is too big the clutch will slip excessively and cause rapid clutch wear. If the Installed Gap is too small, the clutch will drag and cause engine stall.
- Recognize that the Pressure Plate travels along the tabs of the Lower Assembly as it engages and disengages. Anything preventing this travel will prevent full engagement and cause the clutch to slip excessively.
- If you will be installing the Rekluse *Perch Adjuster* as a manual override for your z-Start Clutch, it is critical to have the cable slack adjusted properly. First complete the installation of the z-Start Clutch using this manual and ensure proper installed gap. Then refer to the Rekluse *Perch Adjuster* manual to ensure proper cable slack adjustment.
- **Be very careful not to drop any screws, washers, balls, or springs into the crankcase opening!** It is surprisingly easy to drop a little screw or washer down into your crankcase. It is not always so easy to get it out. Make sure all parts going in and coming out are accounted for before you finish the installation. A strong magnetic probe can often be used to retrieve little parts if you happen to drop something in.

Attention TRX 450R Customers: The following outlines Clutch Basket Dampener Failure. Some Clutch baskets will last a season, and some last only hours. If the dampeners go unchecked clutch damage will result. After reading through the following continue on with the z-Start installation and inspect basket.

Background for Clutch Basket Dampener Failure:

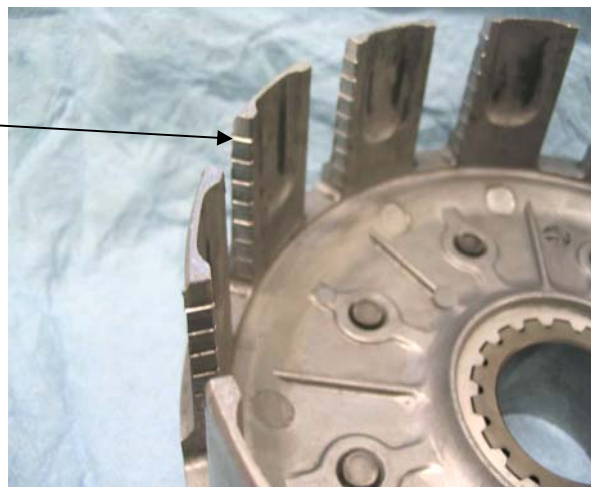
The OEM Clutch Baskets for the CRF 450 and TRX 450R use elastomer dampeners to protect the clutch from shock loading applied to the basket by the drive train and/or engine during normal operating conditions. The dampeners are located inside the clutch basket behind the ring gear. The dampeners take up the slack between the ring gear and clutch basket so that under normal loading they rotate as one. Under extreme loading the dampeners provide a cushion so the ring gear and basket can float independently and keep shock loads from being transferred to the clutch.

As the dampeners wear the system gains slack and shock loads start getting transferred to the clutch. This creates a hammering effect between the clutch basket and ring gear. The hammering transfers to the clutch plates and causes the plates to wear away at the clutch basket and center clutch hub. If the dampeners continue to go unchecked, the hammering progresses until the clutch fails.

Checking Your Clutch Basket for Dampener failure:

Prior to installing the z-Start, it is recommended that you check the condition of your Clutch Basket and Center Clutch Hub. An indication of failing clutch basket dampeners is grooving or notching of the Clutch Basket Ears—where the tabs of the friction discs index into the clutch basket. Another indication of failing dampeners is notching of the center clutch hub where the steel drive plates index to it. **See the following picture.**

Notching along Clutch Basket Ears because of dampener failure.



Maintaining Clutch Basket Dampeners:

Unfortunately the OEM clutch basket does not provide a means to maintain the dampeners. After the dampeners wear out, the clutch basket must be replaced. The choice is either an OEM clutch basket, or an after market basket. The advantage of an after market basket is that the dampeners are serviceable. Barnett, Hinson, and Wiseco all offer replacement clutch baskets with serviceable dampeners.

Warning: Installing the z-Start into a worn out clutch basket can greatly reduce clutch performance, and damage the z-Start Pressure Plate.

Bike Preparation and Disassembly

1. Unhook the return spring on the clutch actuator arm located on top of your engine case. Use a flat blade screwdriver to push the hook of the spring off of the clutch actuator arm so the spring no longer pushes against the clutch actuator arm.
2. Disconnect your clutch cable from the perch and lever.
3. Turn the gas petcock to the off position and lean the quad against a fixed stationary object at a suitable angle so that the quad is stable—the further you lean it over the easier the install will go. Place blocks or stands under front and rear wheels to prevent the quad from falling. When Quad is tipped on its side be prepared to catch the excess gas and oil in a suitable container to prevent a fire hazard.
4. Remove the clutch cover bolts with an 8mm socket and carefully remove the clutch cover.
5. Using a 10mm socket, remove the bolts holding the stock pressure plate to the inner clutch hub. Lift off the pressure plate and the clutch lifter assembly. The clutch lifter assembly consists of the **Clutch Throw-out**, a **bearing**, and a **washer**. Keep the clutch throw-out in its original configuration because they will be re-installed later.

Stock Pressure plate, and 6 bolts and springs are not reinstalled.

Clutch Pack Configuration

6. Remove the clutch boss spring from the bottom of your clutch pack. This will require you to pull out your entire clutch pack, but keep it in order because once you've removed the clutch boss spring you need to re-insert your clutch pack in the exact same order.

Note: The clutch boss spring consists of two rings, one bevel shaped and one flat, which locate in the inner diameter of the bottom friction disk. **You must remove both rings.**

7. Move the bottom friction disk (it has a larger inner diameter than the rest) to the middle of the clutch pack and place one of the thicker walled friction disks at the bottom of the clutch pack. This will provide better clutch performance.
8. Remove 5 of the stock .062 (1.6mm) steel drive plates from the clutch pack and replace them with 5 of the provided *Rekluse .047 (1.2mm) steel drive plates*.

Note: At this point you will have 5 stock drive plates and the 2-piece clutch boss spring removed from you clutch pack.

Warning: The top of the clutch pack must be a **friction disk**.

9. Align the outer tabs of the top friction disk into **the same basket slots** as the rest of the friction disks. This will prevent interference.

Installing the Lower Assembly

10. Place the included M6 threaded studs into the bike's center clutch standoffs 2-3 turns and place 2 Mounting Shims over each standoff. **See picture below.**

Install M6 studs and carefully place exactly 2 Mounting Shims over each stud.

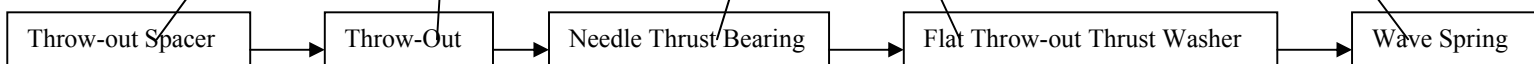


11. Place the z-Start *Lower Assembly* over the M6 Threaded Studs so the Threaded Studs pass through the corresponding set of 6 countersunk holes in the z-Start *Lower Assembly*.
12. Carefully remove M6 Threaded Studs one at a time and replace them with M6 Flat Head Screws. **Apply a small amount of blue Loctite 243 to each screw** and torque to 96 inch pounds with a torque wrench. **Make sure none of the Mounting Shims fall out from under the z-Start Lower Assembly.** After the screws are torqued-down, check to ensure the top part of the *Lower Assembly* spins freely.

Assembling the Rekluse Throwout, Pressure Plate, and Top Plate

13. Guide the .290" x .130" **Rekluse throw-out spacer** (small aspirin-sized spacer) followed by the **Stock Clutch throw-out** into the hole in the transmission input shaft. **Be sure that the spacer is in place between the Stock Clutch throw-out and the throw-out shaft.**

Place the *stock Needle Thrust Bearing* on top of the stock *Throw-out* followed by the *stock Throw-out Thrust Washer*. Place the *Wave Spring* on top of the Lower Assembly. **See following pictures.**



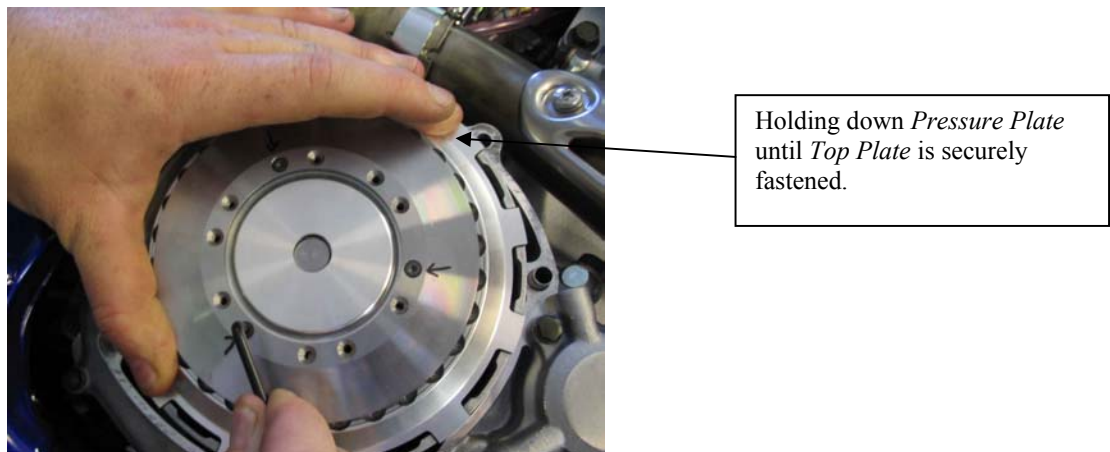
Warning: Perform the next step away from the bike to keep the balls from falling into the transmission.

14. Place a small amount of oil in each of the *Pressure Plates* ball grooves. Place 1 *Tungsten Carbide ball* followed by 5 *steel balls*. Repeat the pattern until all slots contain a ball. **It is very important to have the *Tungsten Carbide* balls spaced evenly around the pressure plate.**
15. Place the *Pressure Plate* with the 30 Balls in place over the z-Start *Lower Assembly*. Index the outer tabs of the *Pressure Plate* into the windows of the clutch basket. **The outer tabs of the *Pressure Plate* must rest in the same clutch basket windows that the outer tabs of the friction disks do.**

Also insure that the tabs of the *Lower Assembly* pass through the associated cut-outs in the *Pressure Plate*. Make sure the top of the *Rekluse Throw-out* assembly passes through the hole in the center of the z-Start *Pressure Plate*. **See following picture.**



16. While holding the *Pressure Plate* down place the *Top Plate* over the *Pressure Plate* and fasten it to the tabs of the *Lower Assembly* with three of the M3 screws, through the three marked holes in the *Top Plate*. Lightly tighten each screw using a 1/4 inch driver and the included Torx T10 driver tip. **See following picture.**



Note: You will have to overcome the z-Start *Wave Spring* and hold the *Pressure Plate* down until the 3 screws are securely fastened in order to tighten the *Top Plate* down properly.

Determine the installed gap of the Z-Start

17. Measure the installed gap of the z-Start. Two sets of feeler gauges are required to measure the Installed Gap. The feeler gauges must be placed between the top most **friction disk** and the top-most **steel drive plate** in the clutch pack 180 degrees apart. **See following pictures.**

Note: Insert the 2 sets of feeler gauges directly across from one another (180 degrees apart) to avoid the clutch pack from rocking resulting in an inaccurate measurement. Find the thickest feeler gauge that still slides back and forth with slight resistance.



The installed gap should be between .030" (0.76mm) and .042" (1.07mm). If the gap is correct, move on to the next step. If the installed gap measurement is off, then the installed gap needs to be adjusted due to manufacturing variances in the bike's center clutch. If the measurement is *greater than .042"* replace one *Rekluse .047" (1.2mm) drive plate* with a stock .062 (1.6mm) drive plate. If the measurement is *less than .029"* replace one stock .062 (1.6mm) drive plate with a *Rekluse .047 (1.2mm) drive plate*.

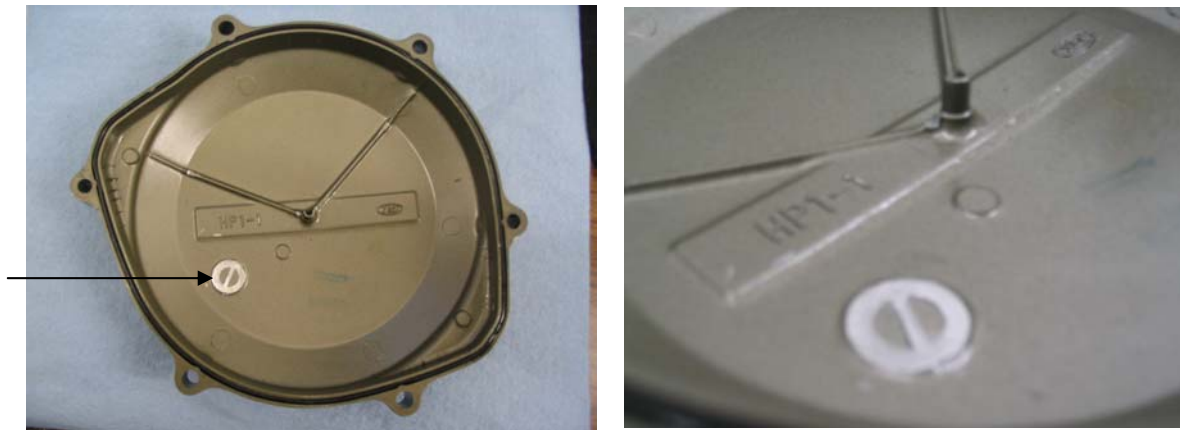
Note: 1 x .055" Drive Plate is included to make finer wear adjustments between stock and Rekluse .047" drive plates.

Note: Be sure to review the included Break-in and Maintenance Guide for clutch pack wear adjustments.

Final Installation Steps

Note: Use 243 Loctite (Blue, oil resistant) to secure all M3 Torx screws

- Using a small amount of Blue Loctite 243, install the rest of the M3 torx head screws and torque to 10 inch/pounds. 10 inch-pounds requires a good crank with the included Torx T10 driver tip, but be careful not to bend the head of the T10 driver tip. Remove the three marked M3 screws, add Loctite, and tighten.
- To eliminate interference with the z-Start Auto Clutch in a TRX 450 you must grind off a tab located on the inside of the clutch cover near its outer diameter. When you remove the clutch cover and look on its inner side you will see a feature/boss sticking up near the cover's outer diameter. The feature sticking up near the outer diameter of the clutch cover will prevent you from being able to bolt the cover back on once you've installed the z-Start. You must grind it off almost flush with the inner side of the cover to prevent interference. A Dremel tool works well for this. **See following pictures.**



Note: The arrow in the above picture points to the feature after it has been ground down.

- Re-install your clutch cover with the included *Rekluse Clutch Cover Gasket*. Hand-tighten each of the clutch cover bolts, then torque to 6 to 8 foot/pounds in 2 steps.

Warning: Rekluse gasket must be used or considerable clutch damage will result.

- Refer to the included z-Start External Perch Adjuster instructions to complete the installation.

WARNING: After a 20 minute break-in period, the clutch plates will seat in and you must re-measure the Installed Gap to guarantee the Installed Gap is within the prescribed range—make drive plate adjustments if necessary. See step 15. Clutch break-in re-measurement of the Installed Gap is necessary whenever new clutch plates are installed.

WARNING: Refer to the “Safety Warnings” and “Break-in Tuning and Maintenance Guide” before operating the z-Start clutch.